

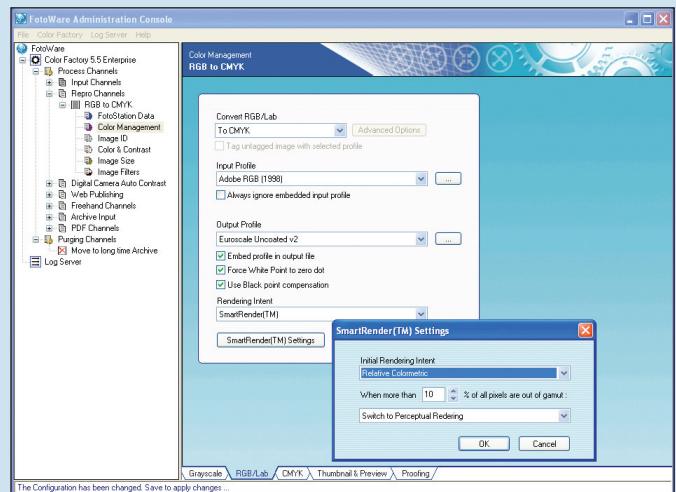


# fotoware

## Color Factory 5.5

- A complete solution for media processing and production workflow

- Advanced PDF processing: Color Management, EPS conversion and page splitting
- 16-bits image engine
- ODBC database connection
- Automatic repro and image enhancement, version 2
- Excellent scalability utilizing multi-processor systems
- Robust architecture. 24/7 availability
- User friendly administration console
- Parallel processing and channel priority control



**Color Factory is a highly efficient server application tailor made to process large quantities of digital images and PDF documents every day. It will automate many of the common tasks in a production workflow, and make sure the daily production runs smoothly and efficiently. Color Factory handles file flow tasks, quality control, automatic repro and image enhancement, color management, PDF processing and archive management.**

Color Factory is a server application running as a background service on Microsoft® Windows® 2000/2003 servers. It takes advantage of the many advanced features of this operating system. The Color Factory server relieves client computers of heavy processing, so that users can continue working undisturbed while time consuming jobs are processed on the server. This also reduces network load, since large files are not transported over the network unnecessarily.

### Processing channels

Color Factory is based on the concept of processing channels. A channel, in essence, has an input and an output folder and a set of processing instructions. When a file is placed in an input folder it is immediately detected by Color Factory and scheduled for processing. When the processing is finished the file is saved in the output folder.

Color Factory can also use a FotoWare Index Manager archive as input. This way, Color Factory can search for files that match a custom criterion, and process the files found according to channel settings. The processed files can be saved to a new destination or replace the old files. A custom text template can also be applied to avoid the same file being processed several times. Channels can run as hot folders, immediately processing files that appear in the input folder, or they can be scheduled to run at intervals or at specified times.

Color Factory utilizes multiple processors by processing several files simultaneously. Setting channel priority levels allows important channels to run immediately while low priority channels work in the background when no high priority channels are busy.

### File formats

Color Factory supports virtually all image file formats, and can convert them to formats supported by standard applications. It also supports PDF documents and processing of images contained in PDFs. File formats are automatically detected by Color Factory, even if the file extension is missing or incorrect. Web optimized GIF and progressive JPEG are supported for web publishing. Movies can be converted to GIF format and still images can be extracted from a movie. Adobe Photoshop® clipping paths are applied, processed or preserved during processing. Most vector formats can be converted to bitmaps and various image formats.

## PDF processing

Color Factory supports processing of PDF files. It can perform all image handling functions in-place on images in a PDF document. Color Factory can also automatically split a multi-page document into separate files for each page, and convert a PDF document to an EPS file.

## Color space conversion

Color Factory supports conversion between all color spaces - grayscale, RGB, CMYK and cieLab. Color images can be converted to grayscale with a contrast-enhancing algorithm for the best possible grayscale rendering.

## Color Management

In addition to normal color space conversions, Color Factory offers several state of the art Color Management tools. Advanced Gamut control allows for automatic selection of the best rendering intent and Pre-flight gamut checking of RGB images can tell you which files does not convert to CMYK correctly. Full control of profile embedding makes Color Factory a perfect match in any production workflow. When generating EPS and FotoStation Pro previews, Color Factory utilizes Color Management for accurate color rendering.

## Image enhancement

Color Factory can automatically enhance images through color adjustment, contrast enhancement, unsharp mask and/or dust removal filters. Automatic functions for contrast and sharpening are powerful and produce improved results on almost all images. Color Factory can automatically perform many of the time consuming operations in large production environments, and more time may be spent increasing the quality of images that require special attention.

## Image Size

Images can be resized with or without resampling. Resizing with fixed proportions is useful when creating images for web publishing. Resampling is done with the highest possible quality. There are many alternatives for resizing to accommodate all possible requirements.

## Automatic captioning and Text tools

Text from different sources can be merged with an image. ODBC can be used to fill selected fields from sources such as a SQL Database or a Microsoft Excel sheet. A predefined text template can be applied to images processed in a channel, either adding to the text already in the files or

replacing existing content. A flexible text extraction is another feature useful for integration with other systems. Complete code page conversion is available for most languages and platforms. Image text is fully compatible with IPTC and Adobe Photoshop file info.

## Image and file sorting

Color Factory can automatically sort all files based on one to four of different criteria like prefixes, IPTC, image size or quality, color space and more. It can even distribute files according to the number of files or megabytes in the destination folder. This makes Color Factory the perfect companion for pre-archival processing or preparation for storage on removable media like CD and DVD. Color Factory can also scan incoming JPEG files for the MS04-028 virus, and then repair it, or move it to an 'error/infected' folder.

## Quality control

Color Factory can automatically evaluate the quality of the images processed through histogram analysis. Accepted images are stored in one folder, for example for production, while images that are not accepted are moved for further manual enhancement. Think of the time-saving possibilities!

## Text and logo application

Color Factory makes it easy and affordable for anyone to include the company logo and copyright notices on images by adding a bitmap image and writing text into the physical image data.

## Image printing

Color Factory supports automatic printing of processed images. You can even create your own print templates to incorporate a company profile with logos etc. Full layout control and text specification is possible using print templates.

## Archive maintenance

Using FotoWare Index Manager, Color Factory can search for duplicates in the archive. Duplicates can be handled as new versions or be routed to a different folder.

Color Factory automatically manages your image archive and prepares images for archiving! Define channels that control the number of images or the number of megabytes in a folder, and move or delete files when the limits are exceeded.



# fotoware

FotoWare a.s, Lille Grensen 5, N-0159 Oslo, Norway  
www.fotoware.com, fotoware@fotoware.com

Authorized Reseller