



### ► ColorAdBoss™ - Color Planning in the Advertising Department

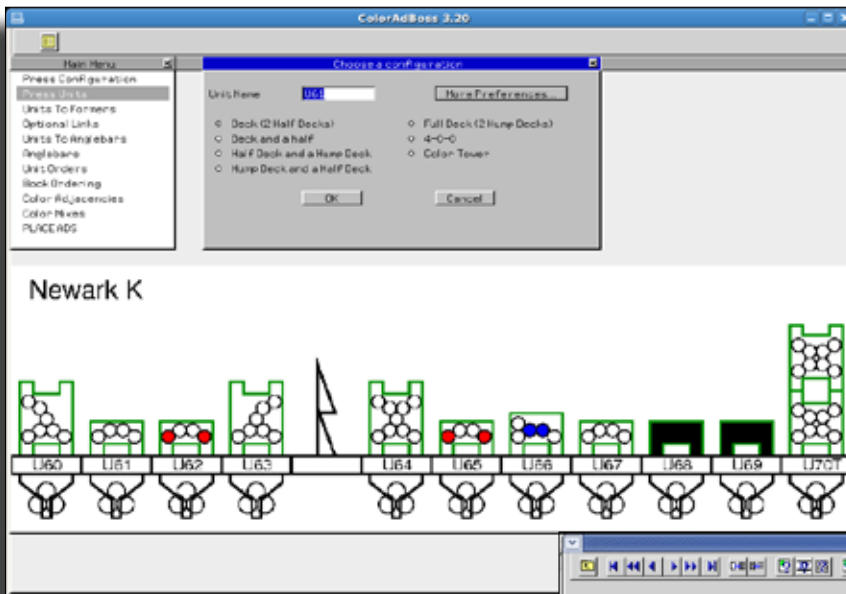
**ColorAdBoss™** optimizes the color availability of your press impositions. ColorAdBoss illustrates all the color availability for any press/edition combination. **Advertising departments can plan and sell color space in advance of final dummymg.**

ColorAdBoss makes it easy to experiment with various section sizes and color placements to enhance your press utilization. **Users report a significant reduction in the time it takes to do edition planning.**

ColorAdBoss manages the configuration of angle bars, split fountains, web feeds and many other factors that go into producing setups that are easily run. It guides the placement of color, double truck and section break ads and interfaces to Layout-8000 for the rest.

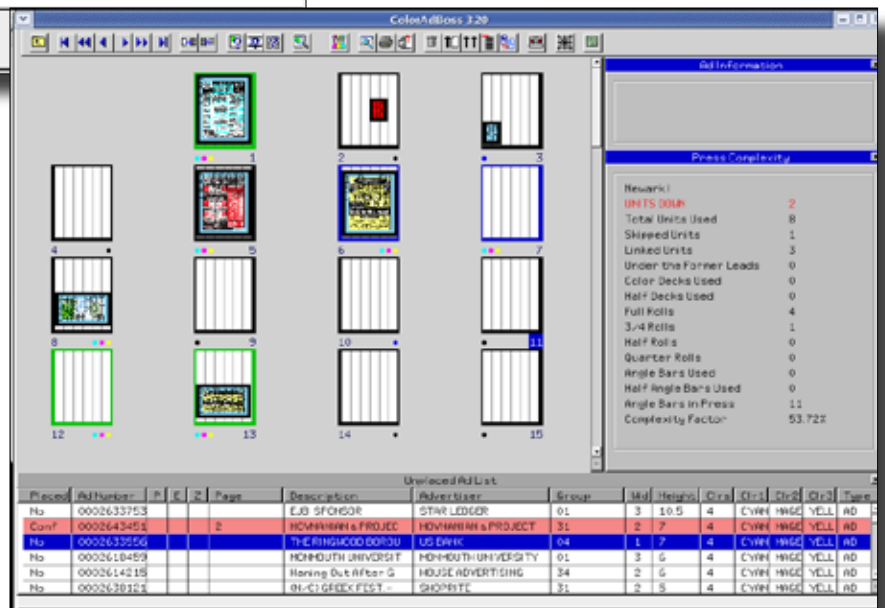
ColorAdBoss produces a sketch of the press plating (often called a press-map), noting where the color decks should be set up, as well as details of color requirements. ColorAdBoss also produces the plate list, color schedule, complexity report, ad placement detail report and color availability report.

**ColorAdBoss quickly finds optimal, simple solutions for your press. It helps you plan your press runs and monitor their efficiency.**



Defining a press configuration is as easy as point-and-click.  
Set this up initially with the help of your pressroom staff.

And use it to sell more color ads.  
With each dragged and dropped ad placed, a new imposition solution is computed and verified. You can sell more color ads with assurance.

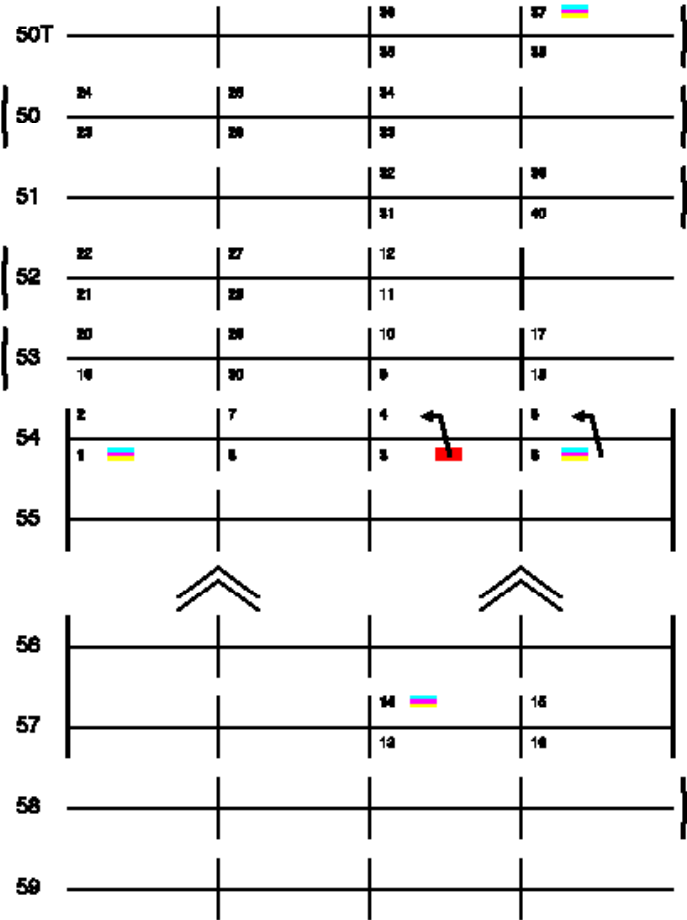


Software Consulting Services, LLC  
630 Selvaggio Drive, Suite 420  
Nazareth, PA 18064  
Sales: 1-800-568-8006  
Fax: 610-746-7900  
E-mail: sales@newspapersystems.com  
www.newspapersystems.com

Last update: July 22, 2010



PUBLICATION: PERMUT  
 Date: 20080729  
 Pages: A:5, B:16, C:12, D:16  
 Beets: Bc1Dc12c10  
 Press: Newsuk I  
 Zone: 1B  
 Straight Run: 48 Pages



Linked To: 54

Linked To: 57

Generated by ColorAllBase  
 Copyright 2008 Software Consulting Services, LLC

PERMUT  
 JULY 1, 2008  
 Plate Cost Report Page 1

Section A													
Ab#P#	Ref#	UM	Sp-1	Sp-2	Sp-3	Sp-4	UM	Sp-1	Sp-2	Sp-3	Sp-4	Debit/Trak	
1	A-1	05	K	C	M	Y	01						
2	A-2	04	K				05						
3	A-3	04	K	SAR			05						
4	A-4	04	K				05						Yes
5	A-5	04	K				05						Yes
6	A-6	05	K	C	M	Y	01						
7	A-7	04	K				05						
8	A-8	04	K				05						

Section B													
Ab#P#	Ref#	UM	Sp-1	Sp-2	Sp-3	Sp-4	UM	Sp-1	Sp-2	Sp-3	Sp-4	Debit/Trak	
9	B-1	02	K										
10	B-2	02	K										
11	B-3	02	K										
12	B-4	02	K										
13	B-5	07	K				05						
14	B-6	05	K	C	M	Y	07	K					Yes
15	B-7	07	K				05						Yes
16	B-8	07	K				05						
17	B-9	05	K										
18	B-10	02	K										

Section C													
Ab#P#	Ref#	UM	Sp-1	Sp-2	Sp-3	Sp-4	UM	Sp-1	Sp-2	Sp-3	Sp-4	Debit/Trak	
19	C-1	02	K										
20	C-2	02	K										
21	C-3	02	K										
22	C-4	02	K										
23	C-5	02	K										
24	C-6	04	K										Yes
25	C-7	04	K										Yes
26	C-8	02	K										
27	C-9	02	K										
28	C-10	02	K										
29	C-11	02	K										
30	C-12	02	K										

Generated by ColorAllBase  
 Copyright 2008 Software Consulting Services, LLC PERMUT  
 12/29/08